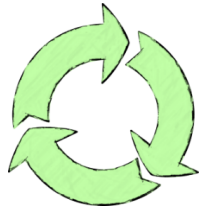
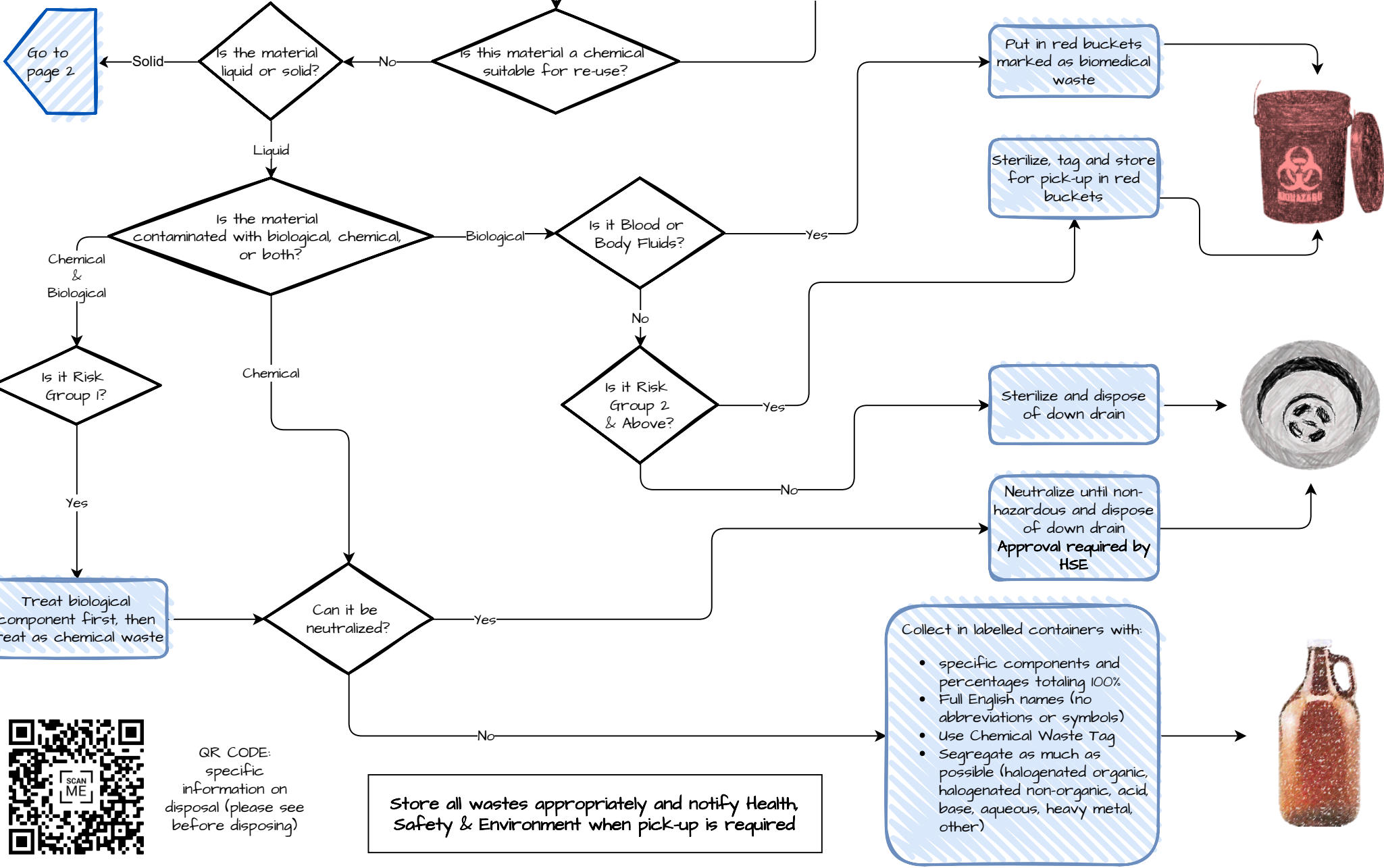


I have laboratory waste to dispose of... what should I do?

Go to page 2



QR CODE:
specific information on disposal (please see before disposing)

Store all wastes appropriately and notify Health, Safety & Environment when pick-up is required

- Collect in labelled containers with:
- specific components and percentages totaling 100%
 - Full English names (no abbreviations or symbols)
 - Use Chemical Waste Tag
 - Segregate as much as possible (halogenated organic, halogenated non-organic, acid, base, aqueous, heavy metal, other)

Solid Waste

Is it a container full of solid chemical?

Yes

Request pick-up



No

Is it a sharp?

Yes

Put in Sharps container



No

Is it glass?

Yes

Is glass dirty or flat?

No

Put in Clean Glass disposal (green label)



Yes

Is it contaminated with biological materials other than Risk Group 1?

No

Autoclave and put in chemically contaminated glass bucket. When almost full tie off bag and close lid



Yes

Autoclave and put in Red Biohazard Bucket



Does it have ethidium bromide?

No

Is the waste biologically contaminated?

No

Package in a thick plastic bag inside of a box marked as ethidium bromide waste



Is it Risk Group 1 only?

Yes

Autoclave in clear bags with tape. Double bag & tag. No biohazard symbols

Is it Risk Group 1 and chemically contaminated?

Yes

Sterilize and dispose of as chemical waste

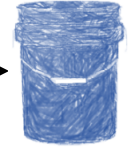
Is it contaminated with a powder?

Yes

Put in secondary container

No

Put in bagged blue buckets. When almost full tie off bag and close lid. Notify HSE for pickup



Is it Risk Group 2?

Yes

Autoclave in orange biohazard bags with tape. Double bag & tag

No

Is it contaminated with Blood or Body Fluids?

Yes

Put in red bags marked as biomedical waste

No

Is it a preserved specimen?

Yes

Is it still in preservation fluid?

Yes

Return to preservation fluid and submit as chemical waste

No

Is it an uncontaminated animal?

Yes

Keep frozen in red buckets marked as contaminated animal / tissue

Keep frozen in red buckets marked as uncontaminated animal / tissue

Keep frozen in red buckets marked as pathological animal



Is it a contaminated or preserved animal?

Yes

Contact HSE to discuss options

No

QR CODE: specific information on disposal (please see before disposing)

